

# Integrated Chronic Disease Management Newsletter

Winter 2008

## A word from the Project Coordinator

Welcome to the Winter 2008 edition of the ICDM Newsletter. I have put together a few things that are being held in the near future that may interest you, as well as some information on the expanded model of chronic care which helps to highlight some of the links between the work we do in chronic disease management and that of the health promotion field. I hope you find this newsletter of use,

and I welcome your feedback on it, and on other things you may like to see in upcoming issues. The newsletter will be emailed out quarterly for distribution within your agencies. If you would like to be added to the mailing list or make suggestions for further issues please contact me Monday to Wednesday on ☎ 58570243.

### Special points of interest:

- **Expanded Chronic Care Model**
- **Melbourne University 4th Annual Research Conference 16th October**

## Project Update

- **After a very lengthy process Campaspe PCP has now finalised arrangements with Stanford University for being the Better Health Self-Management Program licensee on behalf of member agencies. Copies of the license, and a generic BHSM Promotional flyer have been distributed to relevant agencies and we look forward to Better Health Self-Management programs commencing in the near future across the catchment.**
- **We have now decided to further the work that has previously been done around ICDM within the Service Coordination committee, by progressing it through an ICDM Working Party. This working party will report to the SC Committee and will be held in the hour prior to each SC meeting. Anyone with an interest in chronic disease management is welcome to attend this meeting and can contact me for further details. Meeting dates, times and venues are listed on page 4. Terms of Reference for the working group are currently being drafted and work has commenced on a Self-Management Roles and Responsibilities document for agencies to adopt, which will be some of the initial activities of the working party.**
- **Planning has commenced to facilitate two Coordinating Care Networking evenings to be held in Echuca (mid October) and Kyabram (early September). The evenings will be an opportunity for allied and community health professionals to come together with their local GPs to learn more about Care Plans and Team Care Arrangements and about local services to support best care of people with chronic conditions. As we are yet to finalise details and speakers for the evening, agencies will be notified as soon as more information is available.**
- **Campaspe PCP staff continue to be involved in the LMR Diabetes Pathway Project Reference Group and a DHS tender is about to be distributed to suitable agencies for the development of the pathway.**

### Inside this issue:

Expanded Chronic Care Model	2
Chronic Disease Management in Rural Areas	3
Australian Disease Management Association	3
CPD for Allied Health Professionals	3
Service Coordination Meeting Dates	4
ICDM Meeting Dates	4
Professional Development opportunities	4

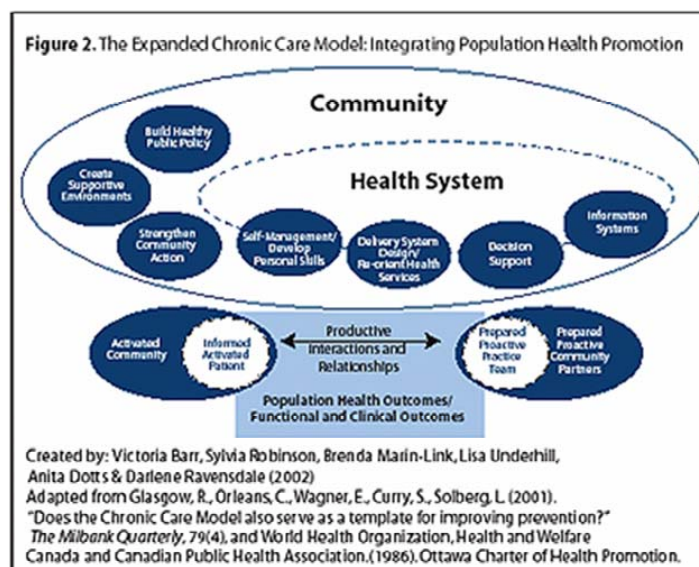
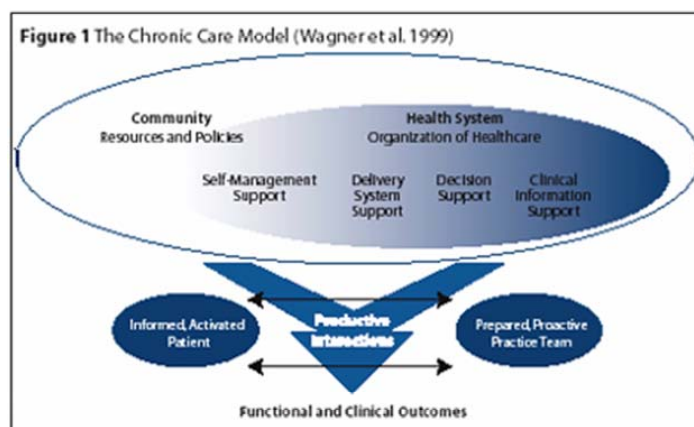
# The Expanded Chronic Care Model

## An integration of Concepts and Strategies from Population Health Promotion and the Chronic Care Model

Victoria J. Barr, Sylvia Robinson, Brenda Marin-Link, Lisa Underhill, Anita Dotts, Darlene Ravensdale, Sandy Salivara.

### ABSTRACT

Given the increasing incidence of chronic diseases across the world, the search for more effective strategies to prevent and manage them is essential. The use of the Chronic care Model (CCM) has assisted healthcare teams to demonstrate effective, relevant solutions to this growing challenge. However the current CCM is geared to clinically oriented systems, and is difficult to use for prevention and health promotion practitioners. To better integrate aspects of prevention and health promotion into the CCM, an enhanced version called the Expanded Chronic Care Model is introduced. This new model includes elements of the population health promotion field so that broadly based prevention efforts, recognition of the social determinants of health, and enhanced community participation can also be part of the work of health system teams as they work with chronic health conditions.



The full article is available at [www.health.gov.bc.ca/phc/pdf/eccm\\_article.pdf](http://www.health.gov.bc.ca/phc/pdf/eccm_article.pdf)

## Chronic Disease Management in Rural Areas

The University of Melbourne School of Rural Health, invites you to participate in its 4th Annual Research Conference.

The Conference will take place on Thursday October 16th 2008 from 9.00am to 5.00pm with a pre-registration workshop on Wednesday October 15th.

The research conference, entitled: "Chronic Disease Management in Rural Areas" is intended for individuals and organizations with an interest in rural health, including general practice, primary health care, integrated care and population health, research and evaluation.

The focus of the conference is to bring mutually beneficial rural research forward and to provide an opportunity to showcase and discuss chronic disease management in rural areas.

### PRE-CONFERENCE WORKSHOP

Facilitated by Ms Beth Wilson, Victoria's Health Services Commissioner

Wednesday October 15th 2008 1-3pm

### CONFERENCE REGISTRATION

#### EARLY BIRD

12th September 2008

#### CLOSE OF REGISTRATIONS

3rd October 2008

More information is available on the website  
[srh-conference@unimelb.edu.au](mailto:srh-conference@unimelb.edu.au)

## Australian Disease Management Association

### 4th Annual National Disease Management Conference 2008

4th-5th September—InterContinental Sydney Australia

The focus of the conference is on disease management, self management, health coaching and population health management programs/services which have demonstrated outcomes in quality, clinical outcomes, cost-effectiveness and efficiency.

The conference will feature;

International and national keynote expert speakers in disease management including Adjunct Professor Ariel Linden from USA and Professor David Colin-Thomé from the UK.

Disease Management outcomes and evaluations.

Disease management programs from the public and private sectors, general practice, specialty practice, national foundation programs and corporate programs.

Disease Management programs for Indigenous people, for people with specific conditions and co-morbid conditions.

For more information visit [www.adma.org.au](http://www.adma.org.au)

## Skilling Allied Health Professionals

Accessing continuing professional development for allied health professionals is as easy as registering on the CPD website at [www.cpdforalliedhealth.org](http://www.cpdforalliedhealth.org). There are a range of online resources available including, upcoming presentations, completed presentations, webcasts and powerpoint presentations. The network and website are great resources for many chronic disease management topics such as motivational interviewing, diabetes, cardiac rehab, self-management etc. Definitely worth a look, so check it out today.



'Working Together for Healthy Communities'

### Campaspe Primary Care Partnership

Emma Brentnall  
PO Box 164  
Rochester 3561  
☎ 5484 4489

✉ emma.brentnall@campaspepcp.com.au

Integrated Chronic Disease  
Management Project  
Coordinator

Di Roberts  
☎ 58570243

✉ droberts@kyhealth.org.au

## Service Coordination Steering Committee 2008 Meeting Dates

Tuesday 19th August	Kyabram & District Health Services, Community Health Group Room	2.00pm
Tuesday 21st October	Echuca Primary Care, Meeting Room	2.00pm
Tuesday 19th December	Campaspe Shire Rochester, Chamber Room	2.00pm

## ICDM Working Party 2008 Meeting Dates

Tuesday 19th August	Kyabram & District Health Services, Community Health Group Room	1.00pm
Tuesday 21st October	Echuca Primary Care, Meeting Room	1.00pm
Tuesday 19th December	Campaspe Shire Rochester, Chamber Room	1.00pm

## Professional Development

### Stanford Chronic Disease Self- Management Program

#### Master Training Workshop

Saturday 22 November to Tuesday 25  
November 2008

Mantra Southbank Melbourne

31 city Road Melbourne.

Cost \$1610 per trainer.

More information:

Pauline ☎ 0419801076 or

Sally ☎ 0408844720

Em: CDSMPtraining@hotmail.com

### Australian Diabetes Society & Australian Diabetes Educators Association

#### ANNUAL SCIENTIFIC MEETING

27-29 August 2008

Melbourne Convention and Exhibition  
Centre

Cost \$535 Member

\$645 Non-member

www.ads-adea.org.au

### Introduction to Health Coaching for Health Professionals

2nd & 3rd October 2008

Rendevous Hotel

328 Flinders Street Melbourne

Cost \$695 (Early bird before 4th  
September)

\$750 (GST incl)

More information:

Health coaching Australia

Janette Gale

www.healthcoachingaustralia.com